

# Space



COMPACT LOOSE-LAY TILES

VINYL



- > Compact loose-lay tile for offices and commercial areas
- > Stylish design in wide colour range
- > Cost-effective installation
- > New generation PUR-Reinforcement: Topclean XP
- > Extreme resistance to scratches and abrasion
- > Excellent resistance to scuffing, soiling and staining
- > Easy low cost maintenance: NO WAX, NO POLISH - FOR LIFE!





# Space

## Modular sophistication

Space is a compact vinyl loose-laid tile that is well suited for heavy-traffic offices and other commercial areas.

The Space range offers a combination of design effects that give a soft, sophisticated look and top flooring performance, including superior wear resistance, exceptional maintenance properties and great loose-laying benefits.

## The Space design expression

The unique and highly attractive Space design expression is very suitable when the goal is to create a dynamic working environment or breath new life into your office premises.

The five different Space patterns are available in two groups of colours – the warm, soft, earthy ones and the more elegant ones in different shades of blue, grey and green.

The Space design expression has a lot to offer in creating the right atmosphere in modern offices.

## Loose-laying saves time and money

Space is a loose-laid flooring and offers by that an extremely smart and flexible solution that cuts down labour and adhesive consumption in the installation phase. And that is only the beginning.

With Space you also completely avoid the most work- and time-consuming process in refurbishment projects, and that is stripping out the existing floor covering and preparing the sub floor for the new one. The whole Space flooring assembly is simply lifted out and sent for recycling, without leaving any damage to the sub floor. This also means that the area is out of use for less time.

Loose-laying is an ideal solution when access to cables and pipes underneath the flooring is required. The tiles are quick and easy to lay – no glue, no hot welding, just a little tackifier to lock the tile in place. It is also easy to replace single damaged tiles.



### Tarkett Environmental Intelligence

We see our Intelligent Flooring Solutions as part of the world's ecological system – and make strong efforts to secure that all our activities are based on respect for the environment. All our flooring products are developed, produced and handled with a great concern for sustainability and environment. We call it Environmental Intelligence and live by this principle in every single step, from vision to waste.



### Environmental Intelligence in our vinyl flooring

Tarkett introduced the first vinyl flooring more than 60 years ago, and environmental sustainability has always been in focus for us.

Space contains 33% recycled material

- 100% recyclable
- Low energy consumption
- Easy and lowest maintenance cost ever
- Low emissions
- Long life cycle avoiding short-term replacement and minimizing old installation waste



# The Space range

## Zen



3677 014

## Wave



3677 015



3677 016



3677 017



3677 018





## Damask



3677 001



3677 002



3677 003



3677 004



3677 005



3677 006



3677 007



3677 008

## Line



3678 001

## Sequence



3678 006



3678 002



3678 007



3678 003



3678 008



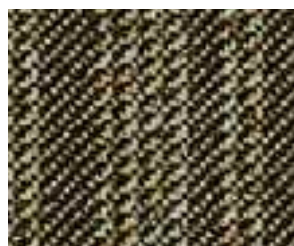
3678 004



3678 009



3678 005



3678 010





## Top performance in all aspects

Space flooring is an excellent choice from both functional and economical aspects. The compact 4mm product profile is tough and durable, and the 0.7mm pure PVC wear layer give excellent resistance to static indentation, abrasion, scuffing and tearing.

### Product construction

- 1** New **TOPCLEAN XP** PUR-reinforcement wear layer: very high resistance and easy maintenance.
- 2** 0.7 mm pure PVC transparent wear layer: exceptional resistance to abrasion and indentation.
- 3** Glass fibre non-woven reinforcement: excellent dimensional stability.
- 4** Solid homogeneous calendered sheet: optimum resistance to tearing.



### TOPCLEAN XP benefits:

- New-generation PUR reinforcement: TOPCLEAN XP PUR.
- Extreme resistance to scratches and abrasion.
- Excellent resistance to scuffing, soiling and staining.
- Easy, low-cost maintenance: NO WAX, NO POLISH FOR LIFE!
- More than 30% saving on maintenance.
- More than 50% saving on water, detergent and energy.
- Excellent life cycle cost.

### TOPCLEAN XP features:

- Alumina oxide micro particles ⇨ surface twice as strong as traditional PUR for better resistance to scratches and abrasion (see Mohs scale).
- Stain-blocking agents ⇨ excellent resistance to stains (marker, iodine and chemicals) .
- Hydrophobic agents ⇨ stops dirt adhering and allows faster drying ⇨ easier cleaning.

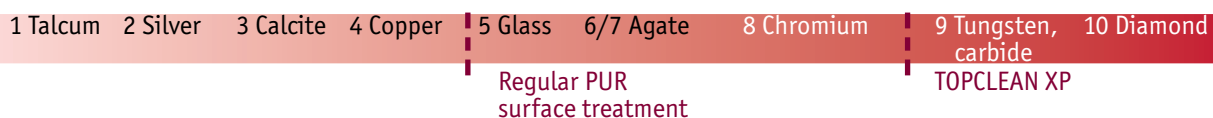
## TOPCLEAN XP: a new generation of surface treatment.

Tarkett features a new generation of higher-resistance surface reinforcement, TOPCLEAN XP, which makes Space much easier to clean without ever needing polish or wax.

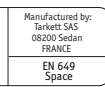
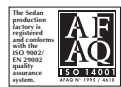
TOPCLEAN XP is a photo-reticulated polyurethane coating, reinforced with alumina oxide. It prevents scratching and abrasion, reduces soiling, removes the need for stripping and polishing and reinforces the floorcovering's resistance to staining by markers, iodine, rubber and shoe soles.

## Surface toughness second only to diamonds

Thanks to the permanent molecular cross-linking of the polyurethane formulation, the TOPCLEAN XP-treated surface surface is extremely resistant. On the Mohs scale of hardness, only diamonds are tougher.



The Mohs scale of hardness characterises the scratch resistance of various materials through the ability of harder material to scratch a softer material



# Space

## DESCRIPTION

Loose lay printed compact floorcovering. Glass fibre reinforcement. New TOPCLEAN XP Polyurethane reinforcement on surface and built-in Sanitized(R) treatment. In tile form. Product standard: EN 649.

| Technical data                        | Standards                          | Stella   |
|---------------------------------------|------------------------------------|--|
| Classification                        | EN 685<br>commercial<br>industrial | Classes:<br>34<br>43   |
| Total thickness                       | EN 428                             | 4.00 mm  |
| Wear layer thickness                  | EN 429                             | 0.70 mm  |
| Total weight                          | EN 430                             | 6 400 g/m <sup>2</sup>   |
| PUR Reinforcement                     |                                    | Yes  |
| Abrasion group                        | EN 660-1                           | Group T: ≤ 0.08 mm   |
| Static indentation                    | EN 433                             | < 0.10 mm  |
| Furniture leg                         | EN 424                             | No damage with foot 0.1 load 100 kg  |
| Castor chair                          | EN 425                             | No damage  |
| Dimensional stability                 | EN 434                             | Length + width < 0.10%   |
| Curl resultant to heat                | EN 434                             | < 2 mm   |
| Reaction to fire                      | EN 13501-1                         | B <sub>fl</sub> s1 loose-laid over any A2 <sub>fl</sub> or A1 <sub>fl</sub> substrate (concrete) and over any derivative wood substrate with a density higher than 470 kg/m <sup>3</sup> |
| Slip resistance                       | DIN 51130<br>EN 13893              | R9<br>≥ 0.3  |
| Electrical properties                 | EN 1815<br>EN 1081                 | < 2 kV on concrete<br>R <sub>i</sub> > 10 <sup>10</sup> ohms   |
| Impact sound reduction                | EN ISO 140-8<br>EN 717/2           | ΔL <sub>w</sub> = 6 dB   |
| Acoustical absorption                 | EN ISO 354<br>EN ISO 11 654        | α <sub>w</sub> = 0.05  |
| Reduction of in room impact noise     | NF S 31-074                        | L <sub>n,e,w</sub> = 74 dB   |
| Light fastness                        | EN ISO 105-B02                     | ≥ 6/8  |
| Chemical resistance                   | EN 423                             | High resistance  |
| Resistance to bacteria                | NF EN ISO 846                      | Sanitized®<br>Grade 1<br>High fungi effect   |
| Thermal resistance Underfloor heating | EN 12524                           | 0.05 m <sup>2</sup> K/W<br>Suitable  |
| Colours                               |                                    | Zen: 1 - Damask: 8<br>Wave: 4 - Line: 5<br>Sequence: 5   |
| Form of delivery                      | EN 426                             | Tiles: 50 x 50 cm  |

| Art. codes      | NCS numbers |
|-----------------|-------------|
| <b>Zen</b>      |             |
| 3677 014        | S5010-Y30R  |
| <b>Damask</b>   |             |
| 3677 001        | S8000-N     |
| 3677 002        | S2010-Y30R  |
| 3677 003        | S1005-Y10R  |
| 3677 004        | S1500-N     |
| 3677 005        | S2000-N     |
| 3677 006        | S6010-R70B  |
| 3677 007        | S5020-R80B  |
| 3677 008        | S2020-R80B  |
| <b>Wave</b>     |             |
| 3677 015        | S5020-R80B  |
| 3677 016        | S1502-R50B  |
| 3677 017        | S1005-Y50R  |
| 3677 018        | S3030-Y20R  |
| <b>Line</b>     |             |
| 3678 001        | S3560-Y90R  |
| 3678 002        | S8505-R80B  |
| 3678 003        | S1002-Y50R  |
| 3678 004        | S1005-Y20R  |
| 3678 005        | S4020-R90B  |
| <b>Sequence</b> |             |
| 3678 006        | S6010-R70B  |
| 3678 007        | S7502-R     |
| 3678 008        | S5502-Y     |
| 3678 009        | S4005-Y20R  |
| 3678 010        | S6010-Y10R  |

The above information is subject to modification for the benefit of further improvement (10/07). For more detailed technical information, please contact Tarkett. Follow Tarkett's installation and maintenance instructions carefully. These instructions are available upon request.



## TARKETT SALES COMPANIES

[www.tarkett-commercial.com](http://www.tarkett-commercial.com)

> **Australia:** Tarkett Australia Pty Ltd – Tel. +61 2 96 34 73 73 > **Austria:** Tarkett Holding GmbH, Niederlassung Wien – Tel. +43 1 47 88 062 > **Baltic States:** Tarkett SAS – Tel. +370 37 262 220 > **Belgium:** S.A. Tarkett NV – Tel. +32 2 520 04 67 > **China:** Tarkett Asia Pacific Limited Shanghai Representative Office – Tel. +86 (21) 62 88 15 38 > **Czech Republic:** Tarkett SAS, org. slozka - Tel. +420-271 001 602 > **Denmark:** Tarkett A/S – Tel. +45 43 90 60 11 > **Finland:** Tarkett Oy – Tel. +358 9 5406 5870 > **France:** Tarkett SAS – Tel. +33 1 41 20 42 49 > **Germany:** Tarkett Holding GmbH, Bereich Objekt – Tel. +49 6233 810 > **Greece:** Tarkett Monoprosopi Ltd – Tel. +30 2 10 576 3889 > **Hong Kong:** Tarkett Asia Pacific Ltd. – Tel. +852 2511 8716 > **Hungary:** Tarkett SAS – Tel. +36 1 437-8150 > **Italy:** Tarkett S.p.A. – Tel. +39 02 893 411 > **Luxembourg:** Tel. +352 949 211 8804 > **Middle East:** Tarkett Middle East – Tel. +961 1 75 2363/4 > **Netherlands:** Tarkett Benelux B.V. – Tel. +31 76 57 80 760 > **Norway:** Tarkett AS – Tel. +47 32 20 92 00 > **Poland:** Tarkett Sp. z o.o. – Tel. +48 22 598 08 81 > **Portugal:** Tarkett SA – Tel. +351 21 427 64 20 > **Russian Federation:** Tarkett Russia – Tel. +7 4 95 777 69 83 > **Slovakia:** Tarkett SAS - Tel. +421 37 6515 404 > **Singapore:** Tarkett Far East – Tel. +65 67 43 53 84 > **South East Europe:** Tarkett Trade d.o.o. – Tel. +381 21 7557 649 • (44) 569 12 21 > **United Kingdom:** Tarkett-Marley Floors Limited – Tel. +44 (0) 1622 854 040 > **Slovakia:** Tarkett SAS – +421 37 6515 404 > **Spain:** Tarkett Floors S.L. – Tel. +34 91 358 00 35 > **Sweden:** Tarkett Sverige AB – Tel. +46 771 25 19 00 > **Switzerland:** Tarkett Holding GmbH, Bereich Objekt Schweiz – Tel. +41 043 233 79 24 > **Ukraine:** Tarkett UA – Tel. +380380 (44) 569 12 21 > **North America:** Johnsonite – Tel. +1 440 543 8916 > **Tarkett Inc. USA:** Tel. +1 713 869 5811 > **Tarkett International:** Tel. +49 6233 811 755 – Tel. +33 41 20 41 01